

Instructions

The package should consist of 4 pieces each of **A** base plate; **B** square post; **C** round dowel; **D** top plate; 8 pieces of **E** Mpingo Disc holders with 3 Discs and 8 single Mpingo Discs, plus 4 pieces of small silk cloth.

Assembly (See Figure 1)

1. Insert post **B** into base **A** with set screws towards the back.
2. Back out set screw on top plate to clear hole. Insert dowel through hole. You may have to sand the hole a little if the dowel is too tight.
3. Back out set screw on post to allow for insertion of round dowel **C**.
4. Set top of plate **D** at 44.5", then tighten all set screws. (Do not overtighten)

Placement (See Figure 2 & Perspective View)

5. Place the 4 stands as shown on Figure 2 "Listening Room Plan."
6. If there is any obstruction to the rear stands, just place the stand in front of the objects, making sure that the left and right stands are mirror imaged. It is not necessary to corner the stands.
7. Place the front pair as shown. For large speakers use the longer distances and the shorter for small speakers. Bi-polar or planer speakers are similar except for the minimum distance from the outer edge.
8. Place 3 each of the Mpingo Discs on the top of each speaker to form a triangle as shown. Pointers on the left speaker should be at the 7 o'clock position, and pointers on the right speaker should be at the 5 o'clock position. With planer speakers, place the disc on the base plate or sub-woofer box of the speaker.
9. The 2 remaining Mpingo Discs are used for treating the rear wall of the room. Place or glue (using double sided tape or glue tac) 1 Disc at the center of the rear wall on the floor, standing it on its edge with the logo facing out and the pointer at 12 o'clock.
10. The last Mpingo Disc should be glued directly above the Disc that's on the floor using the same orientation and 45.25" from the bottom of the disc. This disc is to be at the same level as the top row of discs on the 4 stands. If there is a fireplace, equipment rack, furniture, bookshelf, window, curtain, or Picasso painting in the way, just place the two Discs either in front of or behind these items. In some cases, you will have to install a wood strip or stretch a piece of wide tape from floor to ceiling so that the Disc can be glued.
11. Place one of the Mpingo Disc holder on the base plate of each stand against the square post. Then put another of the holders on the top plate. (Figure 1)

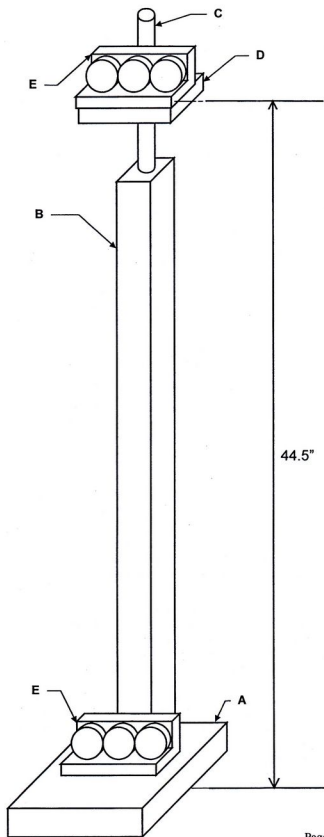
Fine Tuning

Now you are ready for a surprise. Immediately you will notice the difference in the sound stage. There is an increased sense of width and depth, stretching beyond the walls with a 3-dimensional hall effect and ambience. More inner details can be heard. After playing a few of your most favorite music selections, it is time to make it better.

12. By moving the front pair of stands (or its Disc holders) 1/16" (1 mm) in or out, you can focus or widen the front sound stage, but only move them 1/16" (1 mm) at a time. Bringing the stands forward will loosen the focus but provide better ambience. For more air and bloom, you can raise the top set of Disc holders by adjusting the plates or by shimming the holders with paper cards, but only 1/16" (1 mm) at a time. Similarly, by doing the same to the rear stands, the rear sound stage will be similarly altered.
13. Finally, when all your Mpingo Disc holder stands are adjusted, then you can do the final finishing touch by moving the top center Disc on the rear wall ever so slightly (less than 1 mm) up or down so that it will align with the top row of Discs around the room. Once placed at the right spot, everything will suddenly fall into place like the sharp focus of a camera.
14. After you have finished all of this and are relaxing by enjoying your music, be sure to place the 4 pieces of silk (one each) under the top row of Disc holders. Listen for the effect yourself, we need not tell you here.

Shun Mook Spatial Control Quartet™

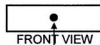
Assembly Drawing



POINTER
(PUNCHED DOT)



TOP VIEW

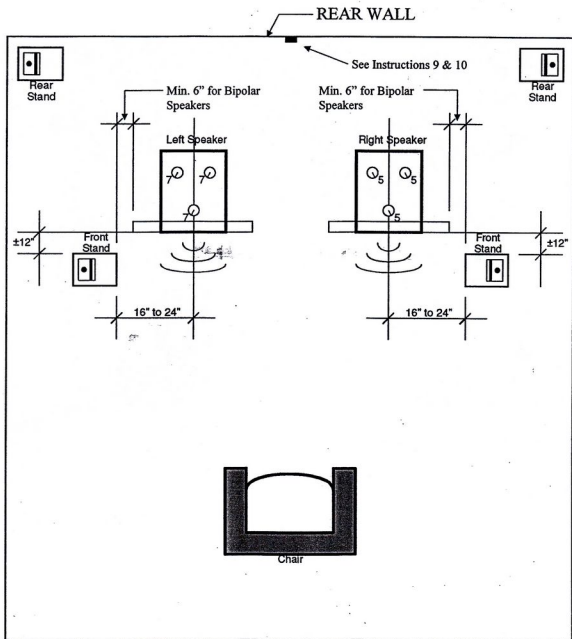


FRONT VIEW

POINTER
(PUNCHED DOT)

Mpingo Disc

Figure 1

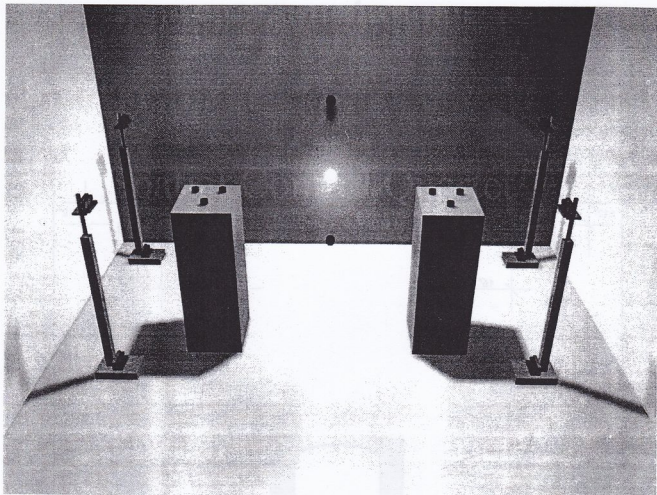


Listening Room Plan

Figure 2

Spatial Control Quartet™

(Perspective View)

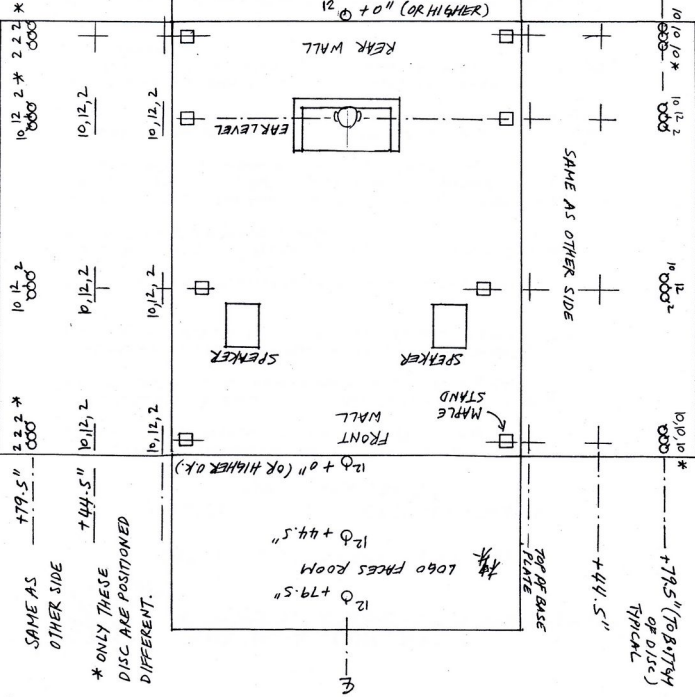


Shun Mook Audio, Inc.

360 Grand Ave #310
Oakland, CA 94610
U.S.A.

Fax (510) 839 0080

SHUN MOOK AUDIO
 SPATIAL CONTROL
 QUARTET, SEXTET
 OCTET TRIPLE-DECK



SAME AS OTHER SIDE
 +79.5"
 +44.5"
 * ONLY THESE DISC ARE POSITIONED DIFFERENT.

LOGO FACES ROOM
 LOGO +79.5"
 LOGO +44.5"
 LOGO +0" (OR HIGHER O.K.)

LOGO FACES AWAY FROM ROOM
 (LOGO SIDE STICK TO WALL)
 LOGO +79.5"
 LOGO +44.5"

LOGO +0" (OR HIGHER)

(NUMBER IS DIRECTION OF POINTER 10'clock)
 10
 10, 10, 2
 10, 12, 2
 10, 12, 2
 10, 10, 2
 *
 +79.5" (TO 8:17:44 OF DISC) TYPICAL
 +44.5"

3

4